

KAESER
KOMPRESSOREN®

in partnership with **HPC**



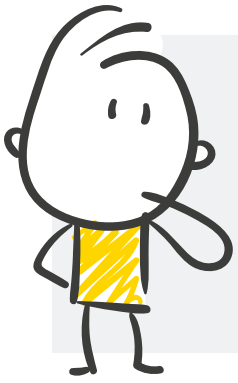
ATEX Blowers

Maximum safety, reliability & flexibility for hazardous environments

Expertly engineered with a comprehensive approach to safety, design, energy efficiency and quality, ATEX-certified blowers are robust and ready for anything, including operation in Zone 2 (Gas) and Zone 22 (Dust) hazardous areas.

Designed, tested and certified in accordance with **ATEX 2014/34/EU**.

www.kaeser.com



What does **ATEX** mean?

ATEX is an abbreviation of the French term “**AT**mosphere **EX**plosible”.

The ATEX Directive applies to all electrical and mechanical equipment and protective systems that are located within potentially hazardous and explosive environments.



Features

- (1) ATEX drive motor
- (2) Anti-static V-belts
- (3) Instrumentation
- (4) Earthing
- (5) Safe and easy access for inspection and maintenance

Unit third-party approved as free from spark discharge in accordance with ATEX 2014/34/EU.

Safety warning labels applied, fully documented & certified with third-party review.

Technical specifications

Model	Gauge pressure		Vacuum		Max. rated motor power kW	Pipe connection DN
	Max. differential pressure mbar (g)	Max. flow rate m³/min	Max. differential pressure mbar (vac)	Max. flow rate m³/min		
BB 69 C	1000	5.9	500	5.9	15	65
BB 89 C	1000	8.2	500	8.3	15	65
CB 111 C	800	8.8	400	8.9	18.5	80
CB 131 C	1000	12.3	500	12.4	30	80
DB 166 C	1000	15.6	500	15.7	37	100
DB 236 C	1000	22.1	500	22.3	45	100
EB 291 C	1000	28.6	500	28.8	75	150
EB 421 C	1000	40.1	500	40.4	75	150
FB 441 C	1000	41.3	500	41.6	90	200
FB 621 C	1000	58.5	500	59.9	132	200
FB 791 C	800	71.3	500	71.8	110	250

ATEX machine options include

- ✓ Vacuum and pressure blower models
- ✓ Available with sound enclosure
- ✓ Zone 2 (3G) & Zone 22 (3D)
- ✓ Configurable switches, sensors, gauges & enclosure heaters

ATEX options include

- ✓ Pressure gauge (Standard)
- ✓ Pressure transducer
- ✓ Pressure switch
- ✓ Filter differential pressure indicator (Standard)
- ✓ Differential pressure transducer
- ✓ Differential pressure switch
- ✓ Temperature switch
- ✓ Temperature gauge
- ✓ Enclosure heater
- ✓ Speed sensor



KAESER KOMPRESSOREN SE

P.O. Box 2143 – 96410 Coburg – GERMANY – Tel +49 9561 640-0 – Fax +49 9561 640-130
e-mail: productinfo@kaeser.com – www.kaeser.com